

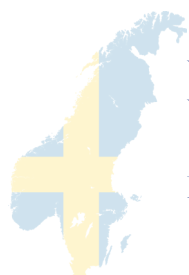


underwater
cleaning
technology



B600

Service Manual



WEDA
Wedavägen 4A
152 42 Södertälje Sweden
Email: info@weda.se
www.weda.se

Tel: +46 8 550 325 50

Fax: +46 8 550 310 50

20180905

1. Standart equipment
2. Technical specification B600
 - 2.1 Cleaning unit
 - 2.2 Trolley and safety transformer
3. Installation and maintenance
 - 3.1 Dataplate and signs
 - 3.2 Remote control and Start Up display
 - 3.3 On/Off Switch
4. Immersion in the pool
5. Running the cleaner
 - 5.1 Manual and automatic mode
 - 5.2 Vertical wall cleaning
6. Recovery from the pool
 - 6.1 Preparation after the use
7. Adjustments
 - 7.1 Bumper bar sensor
 - 7.2 Bumper bar angle
 - 7.3 Drive track tension
 - 7.4 Drive track pressure
8. Maintenance, Service, Inspection
 - 8.1 Shaft seal at impeller, lubrication and replacement
Service intervalls
 - 8.2 Lubrification with grease gun
 - 8.3 Specifications
 - 8.4 Additional inspections after 200 hours
Inspection of drive tracks
Inspection of bumper bars
 - 8.5 Complete overhaul and service
9. Important
10. Trouble Shooting



1. Standart equipment

Cleaner with floating cover and 40 m floating cable
Filter system
Trolley with safety transformer

2. Technical specifications B600

Manufactured in accordance with 89/392/EEC and EN60-335-1 plus EN60-204 for remaining parts.

2.1 The cleaning unit

Dimension, L*W*H (mm)	860x600x300 mm
Weight in air approx.	50 kg
Weight in the water approx.	7 kg
Suction width	600 mm
Maximum suction capacity	1000 l/mn
Maximum depth of operation	7m
Speed	0,2 and 0,4 m/s with 50Hz
Maximum water temperature	40 ° C
Pump motor	42 VAC, 3 phases 50/60 Hz
Power rating	2,3 kW
Drive motor	42 VAC, 3 phases 50/60 hZ
Power rating	0,15/0,25 kW
Maximun noise level	70 dB
Sealing classification	IP 68

2.2 The trolley and the safety transformer

Dimension, L*W*H (mm)	1200x600x980 mm
Safety transformer	3 kVA
Primary voltage	208/400/230 V, 380/400/415 V
Maximun secondary voltage	50 V (free runing)
Sealing classification	IP45
Overcurrent relay	12/5,7/5,5 A



underwater
cleaning
technology

3. Instalation and maintenance

3.1 Dataplate and signs

Read the information on the dataplate on the safety transformer box .

The connected primary voltage can be checked after removal of the top cover of the safety transformer.

The voltage is marked on the connectors.

The overcurrent relay can be reset with the RESET-button on the safety transformer box.

Read the WARNING sign.

Read the dataplate on the cleaner.

Note that there is no sign of earthing since it is connected through the safety transformer.

An approved earth leakage breaker must be used all the time. It should be installed at the electrical supply.

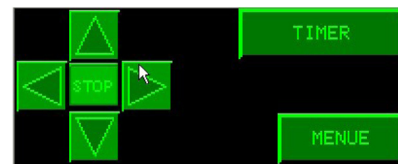
Make sure that the fuses are of the correct size and that they are intact.

Inspect the earth leakage breaker.

3.2 Remote control and start up display



Remote control



Start up display

Please consult the PLC control system Instruction manual.

3.3 On/Off Switch

Connect the el.cable to the supply

Turn the On/Off switch to position 1 .



When the switch is on position 1/On it lights.

4. Immersion in the pool

Make sure no-one is in the pool.

Drive the trolley to the poolside , to a point at the middle of the longside of the pool.

Stop at least 2 meters away of the side of the pool. (3,5 meter in the UK)

Lock the rear wheels of the trolley.

Pull out the ramp and let it drop to the floor. The ramp is situated at the front of the trolley.

Make sure the On/Off switch is on the position " 0 " .

Mount the filter system on the discharge outlet and lock it.

Release the floating cable and put it in the pool.

Important ! The floating cable has to be kept cool.

Connect the cable to the line outlet.

Turn on the unit and drive it with the remote control over the poolside.

Submerge the pool cleaner gently in the pool holding the floating cable to make sure that the machine and the pool bottom will not be damaged.

5. Running the cleaner

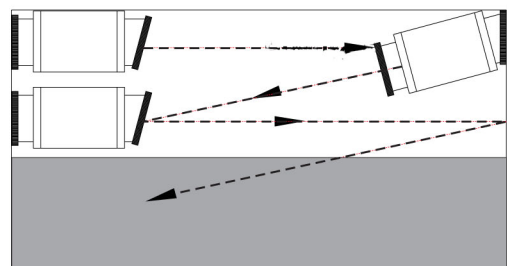
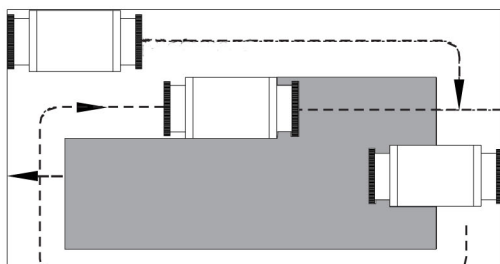
5.1 Manual and automatic mode

Start by driving the cleaner along the walls around the whole pool.

Then start the cleaner forward parallel with one short side of the pool, the angle of the bumper bars setting controls the turning against the opposite (long) side of the pool.

The automatic mode is always on and when a bumper bar run against a wall the sensor inside send a signal to the PLC control box which will drive the machine in the opposite direction.

Drive the cleaner manually with the remote controle or the start up display .



5.2 Vertical surface cleaning

Prepare the cleaner by moving the rubber strips (at the front and back edge of the bottom plate) to the lower position .

Drive the cleaner in the pool towards the wall to be cleaned.

Stop the machine with the pump motor running.

Pull the cleaner upwards with the bottomplate towards the wall .

Grab the bumper bar and let the unit suck itself onto the wall.

Drive the unit on the wall in manual mode.

6. Recovery from the pool

Drive the cleaner backwards against the wall to a spot near the trolley.

Lift the cleaner by the floating cable slowly up to the water level .

Keep the remote control within reach.

Grab the lifting rope and let the unit lean over the pool edge.

Start the unit and drive it over the edge and via the ramp onto the trolley.

Stop with the remote control.

Turn the unit off, disconnect the power supply and coil up the cables on the trolley.

Move the ramp into the driving position and unlock the trolley wheels.

Move the unit to its storage.

6.1 Preparation after use

Inspect and clean belts, impeller, brushes and wheels.

Remove the filter bags.

Flush the bags with water after turning them inside out.

Let the bags dry off.

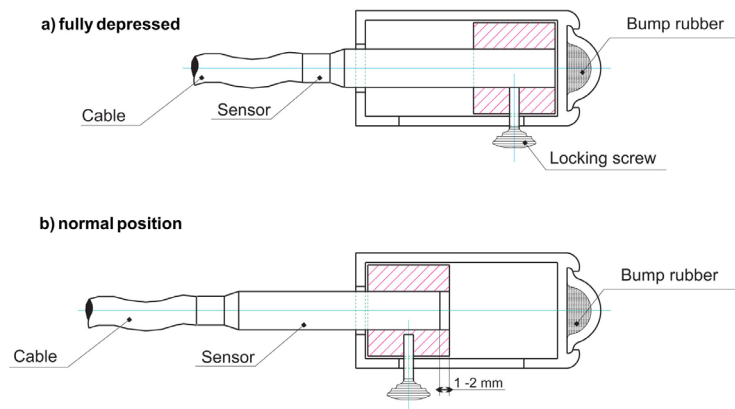
Flush the cleaning unit with water.



7. Adjustments

7.1 Bumper bar sensors

Release the screw that holds the sensor . Press the bumper bar all the way in.
Make sure that the sensor touches the bumper bar bottom when fully depressed.
Lock the sensor screw. Let the sensor bar go back to its resting position.
Release the sensor screw and move the sensor out 1-2 mm to ensure that it does not touch the bumper bar.
Lock the sensor screw again, by hand.
Important ! Do not tighten too hard . This may damage the sensor.

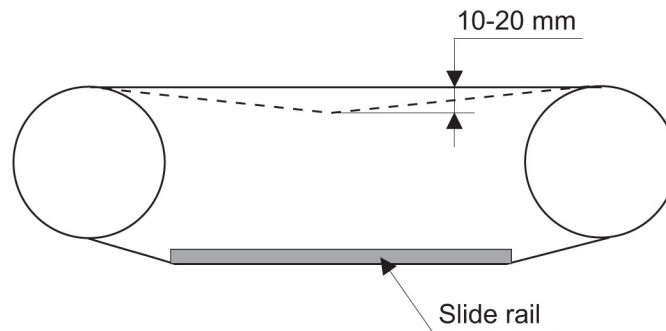


7.2 Bumper bar angle

To make sure that the whole pool is covered in automatic mode, the bumper bar should be set at the correct angle.
Release the four screws holding the adjustable supports.
Release the two nuts holding the bumper bar.
Set the bumper bar in the desired angle.
Tighten the nuts.
Check that the bumper bar moves in and out without jamming.

7.3 Drive track tension

The drive track tension can be adjusted by moving the rear wheel forwards or backwards. Release the shaft slightly, adjust with the adjusting screws. The drive track should have a play according to the picture.

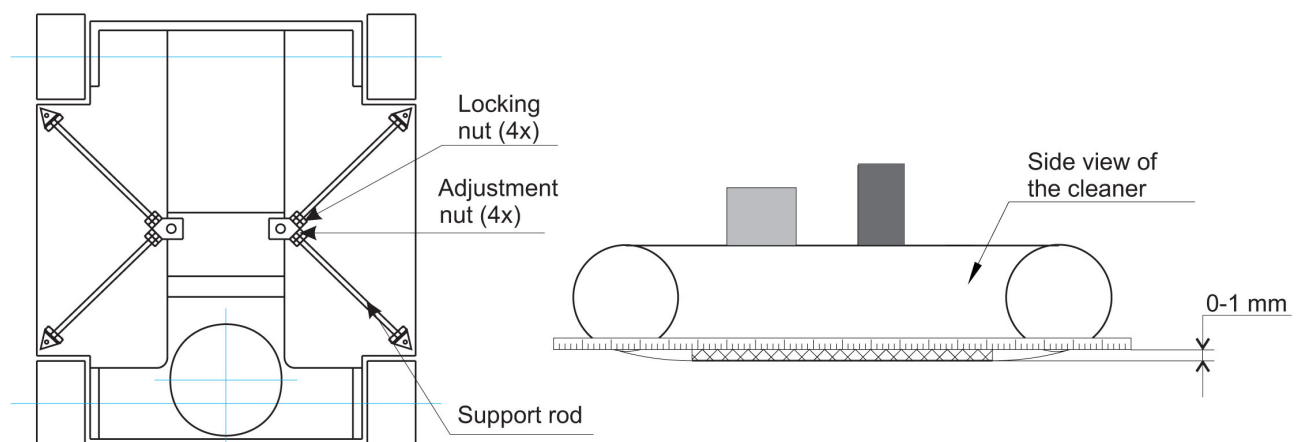


7.4 Drive track pressure

To ensure that the machine turns and stop correctly the drive track pressure must be concentrated on the slide rails along the base of the machine.

Position the cleaner on a flat surface such as the transport trolley and ensure that the drive tracks are fitted.

1. Loosen the four locking nuts on the support rods at the bracket located on the pump housing.
2. Adjust the nuts against the bracket so that the support rods press the wheels down onto the surface.
3. Now adjust the nuts until each wheel has a maximum 1 mm gap between the track and the surface.
4. Lock with the locking nuts.



8. Maintenance, Service , Inspection

8.1 Shaft seal at impeller. Lubrification and replacement. Service intervals.

Cleaners used at depths not exceeding 5 m should be lubricated after 200 hours of operation.
The seal should be replaced after 1000 hours of operation.

Operation depths 5-7 m : lubricate the shaft seal after 10 hours of operation.

The seal should be replaced after 500 hours of operation.

Replacement of the seal is preferably carried out in connection with a complete overhaul.

8.2 Lubrication with grease gun.

Use only Weda Poolcleaners non toxic white grease .

Five strokes with the grease gun is sufficient.

Do not overfill, excessive grease will be forced out.

8.3 Specifications.

For grease gun : Weda Poolcleaners white non toxic special grease WP N° 740 388.

For screw gear : oil API GL4 75W90, 100 cc WP N° 740 209 .

8.4 Additional inspection after 200 hours

Inspection of drive tracks

Inspect the drive tracks tension

Inspection of bumper bars

Make sure that the bumper bars move in and out without jamming.

If necessary disassemble, clean the parts and reassemble.

8.5 Complete overhaul and service after 1000 hours

Contact your Weda service agent.



9 Important

Do not use the cleaner for period longer than 10 minutes out of water.

Use only Weda Poolcleaner original spare parts.

Max. test pressure inside machine 0,5 bar.

Do not pull the unit by the power cable.

Avoid twisting the cables or dragging the cables along poolside.

A twisted floating cable is easily untwisted after disconnecting it from the transformer.

Do not attempt to release any materials caught in the impeller while the pump is running.

Test the earth leakage breaker every week.

Do not connect the unit electrically while there are people in the pool.

Note : The whole unit must be electrically disconnected before any service work.

All internal work in the safety transformer must be handled by an approved electrician.

DO NOT USE THE CLEANER IN EXPLOSIVE OR INFLAMMABLE ENVIRONMENTS.



underwater
cleaning
technology

10 Trouble Shooting

Note! The entire system must be disconnected from the main power source before all service operations. All electrical work must be handled by a certified electrician!

Problem	Reason	Remedy
Pump does not run and the cleaner does not move	1. Incorrect phase sequence 2. Fuses tripped out 3. Cable defect 4. Blocked impeller 5. Over current relay has tripped 6. Power failure has occurred	Switch main switch to other position Replace the fuse Replace or fix the cable Remove the obstacle Reset with reset button Start over from scratch
The motor protector (Over current relay) trips out after a short while	1. Blocked impeller 2. Incorrect voltage 3. Incorrect phase sequence 4. Over current relay set too low 5. Water inside the pump	Remove the obstacle Contact electrician Switch breaker on Power Control Box Increase in steps by 0,2 Contact Weda service
The cleaner does not move but the drive motor runs	1. Magnetic clutch switch off 2. Magnetic clutches slip 3. No power (electrical) to the clutches	Check the switch Clean the clutches Reset the fuse in the Power Control Box
The cleaner turns slowly or not at all	1. Drive tracks defect 2. Incorrect adjustment of the drive tracks 3. Magnetic clutches loose 4. Oil or water in the clutches	Replace with new See paragraph 5 above. Contact Weda service Contact Weda service
The cleaner does not turn when it correctly hits the wall	1. The sensor are broken or not adjusted 2. PLC defect	Change or adjust Control the PLC

